

Wessex Public Involvement Network

Prof Mark Mullee, RDS South Central

Lynn Kerridge, NETSCC

Tina Coldham

One NIHR

- Regional partnerships & collaborations:
 - South Coast PPI Network
 - Public Involvement collaborations
 - Wessex NIHR Directors
- Wessex Public Involvement Network
- “Going the Extra Mile”
 - Vision for the future
 - Recommendations, “....*identify cross-cutting activity in public involvement and develop joint plans and stable resourcing where relevant.*”

Vision



The Wessex PIN will improve:

- **Reach:** Increase the ease and opportunity of involvement in research for the public
- **Refinement:** Expand and scale up existing collaborative working to achieve qualities and economies of scale and deliver NIHR's national strategy
- **Relevance:** Ensure public priorities for research are reflected in Wessex activities
- **Reputation:** Ensure Wessex is an exemplar in effective and appropriate public involvement in research

The default way of working will be co-production

Key commitments



Identified through discussions with PPI leads and members of the public:

- Demonstrate **impact** through quantitative & qualitative measures
- Improve **diversity** and provide a platform for seldom heard groups
- **Demystify** research and encourage public members to become involved in research

What will it actually do?

- Coordinate policies: Agree and disseminate standards, values, and policies
- Share knowledge: Share learning, innovations, advice etc from different experiences & perspectives; national to regional, within & out with NIHR
- Share people, public patient groups, split posts, cross cover, secondments
- Share resources, materials, guidance, training places
- Joint events and initiatives
- Joint work programme, to innovate, to deliver on common challenges, communications, recruitment etc
- Provide a professional and public member support network

Who will be included

Wessex NIHR group:

- Clinical Trials Unit
- INVOLVE
- James Lind Alliance
- NIHR Biomedical Research units/centres and Clinical Research Facility
- NIHR Clinical Research Network
- NIHR Collaboration for Leadership in Applied Health Research and Care
- NIHR Dissemination Centre
- NIHR Evaluation, Trials and Studies Coordinating Centre
- NIHR Research Design Service
- NIHR School for Primary Care Research

Once established, link with other networks (e.g. charities, trusts, industry, GP practices etc)

What next?

- Investing in the Wessex PIN has the potential to put the Wessex Region at the forefront of how Public Involvement is developed and delivered
- Commitment from the Wessex NIHR Directors for ‘pump-priming’ dedicated resource to drive this forward
- Leadership and oversight by the RDS and Wessex Institute

Longer term vision



Wessex Centre of Excellence: a centrally coordinated and managed PPI team, providing PPI support across all partners

Co-Production



Recommendation 6 – Co-production:

The public, researchers and health professionals should be empowered and supported better to work together in the future. In respect of the co-production principles that we have been minded to embrace we recommend that the NIHR consider establishing a co-production taskforce to examine how these can be applied in practice. The taskforce should have the ability to undertake rapid-testing of these to establish their importance in delivering research excellence.

Going The Extra Mile, 2015

GTXM Principles

A horizontal bar composed of seven colored segments: green, dark green, orange, purple, red, dark blue, and light blue.

- 1. Building on people's existing capabilities**
- 2. Promoting mutuality and reciprocity**
- 3. Developing peer support networks**
- 4. Breaking down boundaries**
- 5. Facilitating as well as delivering**
- 6. Recognising people and their experiences as assets**



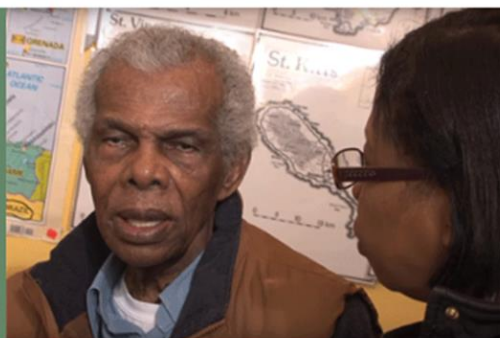
Co-production

Co-production training and resources for health and social care managers commissioners, frontline practitioners, people who use services and carers. Improve participation and co-production with people who use services and carers to develop and deliver better social care and health provision.

How social care brings generations together

Huffington Post blog by SCIE's Ewan King on how innovative approaches including volunteering, can bring people together, and improve outcomes for young and older people.

[> Huffington Post article](#) [> SCIE co-production guide](#)



Enquire about tailored co-production training or consultancy support



ENQUIRE

Training course

Co-production training in London and Birmingham

Book now for London 30 November & Birmingham 17 January. Only £125



Co-production training

SCIE can develop, deliver and evaluate a training and learning programme tailored to your needs.



[> View more: Training courses](#)

News

"I didn't like the term when I first heard it"

What co-production means to Network member Laura Able



What it is and how to do it

Resources to define co-production, show it in action and explain how it works in practice to improve services.

[> At a glance: Co-production in social care: what it is and](#)



Supporting co-production

Practical examples of how co-production, user involvement and participation can help make health and social care services work better.

[> Paying people who receive](#)



Co-production with different groups


Resources to show how co-production of health and social care services with different groups can help improve the quality of care.

[> Older people](#)

Wessex PIN



- Thought Leader in Co-production for NIHR
- Explore the possibilities of Co-production in research
- Practice Leader making Co-production happen

A horizontal bar composed of several colored segments: green, dark green, orange, purple, red, dark purple, and blue.

“The radical way is respect for human beings. We can change the world by an economics of respect”

Edgar P Cahn

No More Throw-Away People 2000